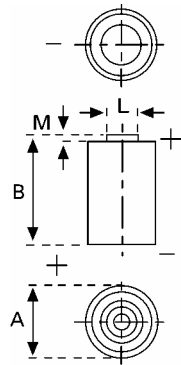


## Data Sheet



**Type Number** ..... 6205  
**Designation IEC** ..... CR 17345  
**System** ..... Li-Manganese dioxide / Organic Electrolyte

**UL Recognition:**..... MH 13654 (N)  
**Nominal Voltage** ..... 3 V  
**Typical Capacity C** ..... 1550 mAh  
 Load 100 Ohm, at 20 °C down to 2 V

**Weight (approx.)** ..... 17 g  
**Volume** ..... 7 ccm  
**Coding**..... Date of Manufacturing Month / Year

**Temperature Ranges**

	min	max.
Storage .....	-20 °C	45 °C
Discharge .....	-40 °C	70 °C <sup>*)</sup>

**Dimensions**

	min	max.
Diameter (A) .....	16,4	17,0
Height (B) .....	33,8	34,5
Shoulder Diameter[L].....	6,2	6.4
Shoulder Height [M].....	1,18	1,23

**Segment** ..... Electronic

**Main Applications** ..... Photo Electronic Devices

### Typical Capacities (at 20 °C)

Discharge Type	Load	End Voltage: 2.0 V
Continuous 24h/d,7d/w	100 Ω	Capacity [mAh]: 1550

<sup>\*)</sup> Typical temperature range is -20 °C to +60 °C, contact VARTA if the application is intended to be outside the range of -20 °C to +60 °C.